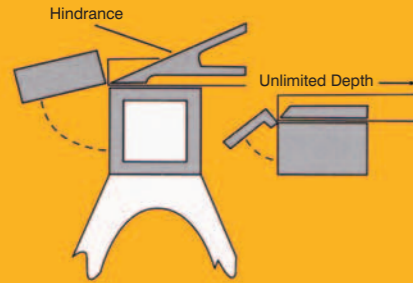
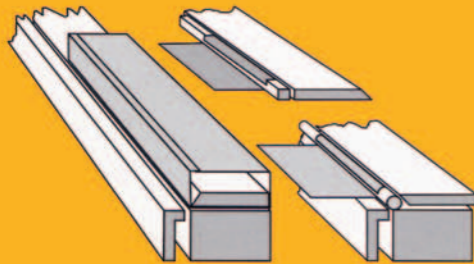


HIGHER VALUE & PERFORMANCE FOR METALWORK INDUSTRIES

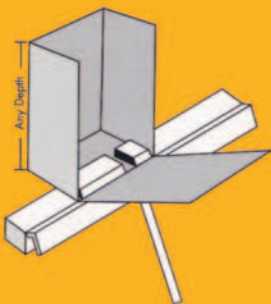
The bulky nature of clamping structures on conventional machines can also hinder many bending operations. The compact clamp bar on an Electrabrake allows for a great deal more freedom. An example of this is the formation of deep and narrow channels as shown below.



The clamp bar of the Electrabrake can be easily removed and replaced or augmented with other tooling such as round or square bars as shown below. Provided the magnetic circuit is complete, then effective clamping is maintained and many shapes are possible.

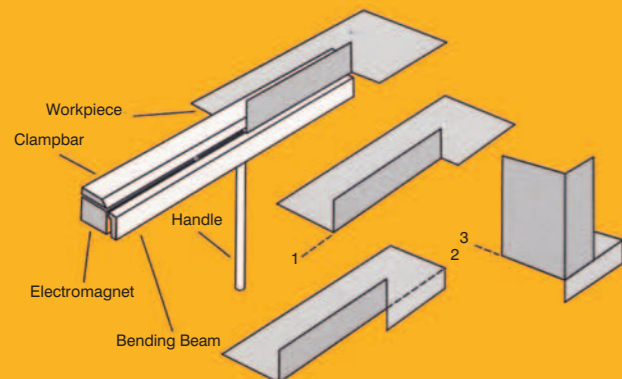


In a conventional bender, the maximum depth of box that can be formed has a very definite limit. However, a box of any depth can be formed by the Electrabrake.



The Electrabrake is a simple and compact sheet metal bending machine with great versatility. It differs from all other bending machines in that it employs electro-magnetic rather than mechanical clamping of work.

Its open-ended and throatless design makes it possible to form shapes that are not possible to do on other machines. The bending examples shown below demonstrate the advantages of the open-ended feature



SPECIFICATIONS MODELS EB2000/EB2500/EB3200

NOMINAL CAPACITY*

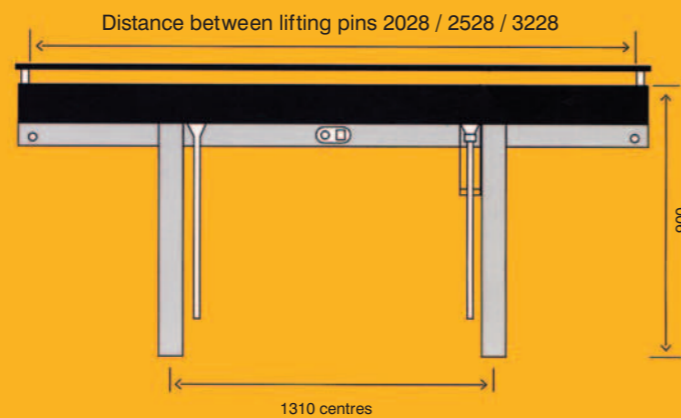
MODEL EB2000	2000mm x 1.6mm (6ft x 16g)
MODEL EB2500	2500mm x 1.6mm (8ft x 16g)
MODEL EB3200	3200mm x 1.2mm (10ft x 18g)

CLAMPING FORCE (with standard full-length clamp bar)

EB2000	9 Tonne
EB2500	12 Tonne
EB3200	10 Tonne

ELECTRICAL

Supply:	1 Phase, 220/240V ac
Nominal current:	EB2000: 12 Amp EB2500: 15 Amp EB3200: 15 Amp
Duty cycle:	30%
Protection:	Thermal cut-out, 70° C



* Technical information sheets are available

ELECTRABRAKE MODELS

EB0625	625mm x 1.6mm	(2ft x 16g)
EB1000	1000mm x 1.6mm	(3ft x 16g)
EB1250	1250mm x 1.6mm	(4ft x 16g)
EB2000	2000mm x 1.6mm	(6ft x 16g)
EB2500	2500mm x 1.6mm	(8ft x 16g)
EB3200	3200mm x 1.2mm	(10ft x 18g)

AVAILABLE FROM:



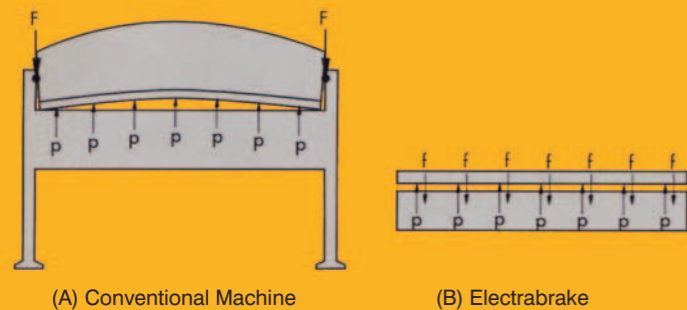
Contact us:

Tel: 27 11 826-6111 Fax: 27 11 823-3439
 Website: www.electrabake.com
 Email: sales@electrabrake.com



ULTIMATE EFFICIENCY IN SHEET METAL BENDING OPERATIONS

A GREAT CONCEPT IN COST – EFFECTIVE SHEET METAL BENDING



The Electrabrake Sheet Metal Bending Machine is highly versatile and easy to use. It is ideal for bending all types of sheet metal, including steel, aluminium, copper and coated materials. A further use is bending pre-heated plastics for sign making.

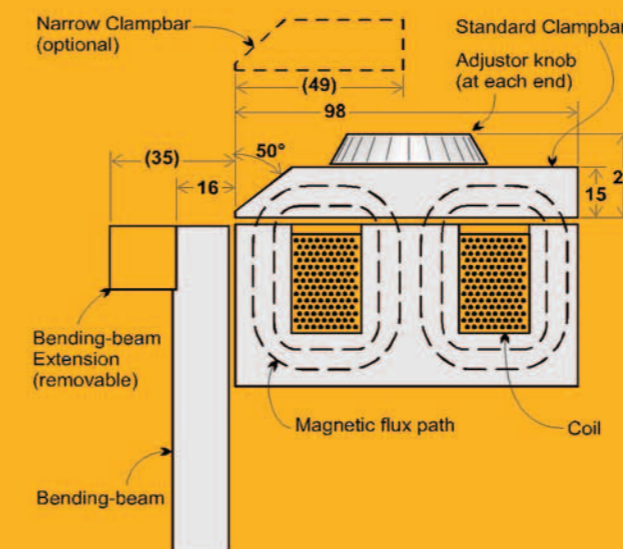
Conventional bender (A) The clamping structure is supported only at the ends of the machine and therefore needs to be large and bulky to minimize deflections during heavy gauge bending.

Electrabrake (B) The bending load is resisted by a magnetic clamping force along the entire length of the clamping piece. Deflection or bowing of the clamp-piece is therefore not possible and the result is very straight bending.

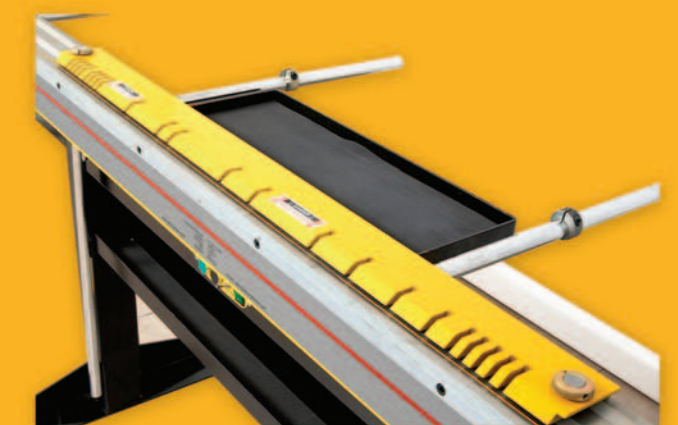
Electrabrake's electromagnetic clamping system provides great freedom to form the work piece into complex shapes – it is easy to form very deep narrow channels, closed sections and deep boxes that are difficult or impossible to do on a conventional bending machine.

Electrabrake's unique hinging system applied to the bending beam results in a completely open-ended machine, giving greater versatility of application, easier operational procedure and the ability to form partial bends.

Electrabrake's ergonomically designed controls enhance operational speed and efficiency with fingertip control of clamping alignment and automatic adjustment for metal thickness.



The heart of the Electrabrake is its electromagnetic clamping system. Simply place the material to be folded on the electromagnetic bed and position the mild steel clamping bar on top. Once the main magnetic force is applied, the material is securely clamped and can be bent to the angle required.



The clamp bar on Electrabrake can easily be removed and replaced or augmented with other tooling such as round or square bar. Providing the magnetic circuit is complete, the effective clamping is maintained and a wide variety of shapes can be formed. Electrabrake's built-in two stage magnetic interlock system ensures fast, yet fully effective, operator safety.